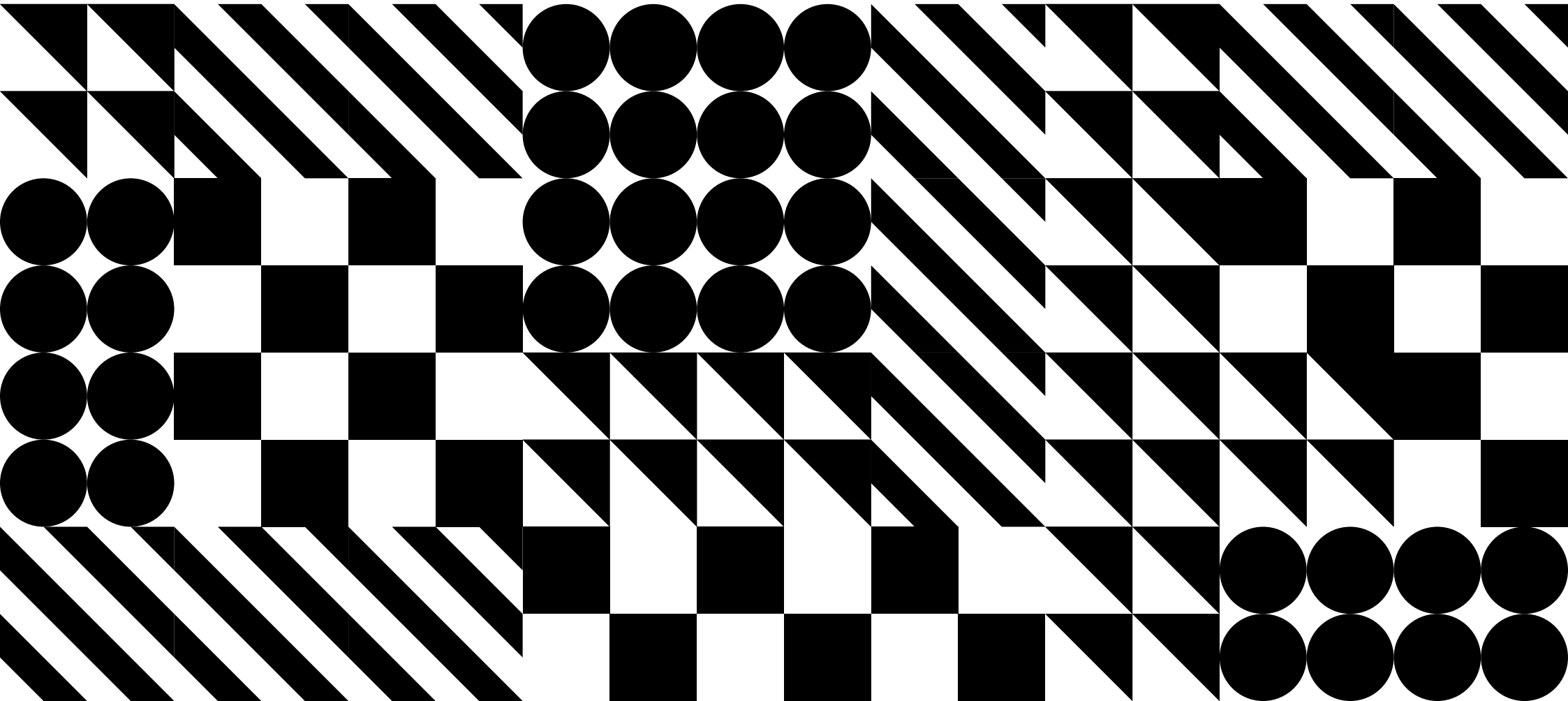


ascolour.

CATALOGUE







C O N T E N T S .

OUR FABRICS. 1

OUR COLOURS. 3

SOCIAL RESPONSIBILITY. 5

MEN. 6

T-Shirts 8

Singlets / Tanks 20

Long Sleeve Tees 23

Shirts / Polos 26

Sweatshirts 31

Jackets 39

Pants / Shorts 43

ORGANIC RANGE. 49

WOMEN. 56

T-Shirts 58

Singlets / Tanks 68

Long Sleeve Tees 73

Shirts / Polos 75

Sweatshirts 77

HEADWEAR. 80

BAGS. 87



1.



3.



5.



2.



4.



6.

1. COMBED COTTON

Our bread and butter. Our combed cotton is made from long fibres with a fine weave making it ideal for printing – the best in the market. We produce this in various weights: 3.5, 3.8, 4.4, 4.7, 5.3 and 6.4 oz/yd².

2. ORGANIC COTTON COMBED

We are really excited to be extending our range of products made from this eco-friendly fabric. This cotton has been grown without the use of herbicides or pesticides. See page 6 for our range of organic products.

3. CARDED COTTON

Carded cotton has not had its fine top layer shaved off and is made from shorter fibres. The result is not as soft as our combed cotton but is durable and more cost effective. We use this for our price-point Basic Tee and Base L/S Tees.

4. COTTON/POLY BLEND

We have just developed a new fabric that requires less polyester to achieve the popular 'marled' look making for a softer, more cotton-rich result. Check out our new mid-weight Staple Heather Tee.

5. COTTON/POLY FLEECE

We use an anti-pill, cotton-rich polyester blend for our heavier weighted sweatshirts. Our most popular being the 10.3 oz Stencil Hood which is 80% cotton 20% polyester.

6. COTTON/POLY FRENCH TERRY FLEECE

For our lighter weight sweats we prefer a 75% cotton 25% polyester anti-pill French Terry fleece blend. The French Terry construction makes it more breathable than a standard poly-blend fleece.

OUR FABRICS.

7.

9.

8.

10.

11.

7. COTTON FRENCH TERRY

We've recently introduced cotton French Terry in a new range of premium sweatshirts. Heavy weight and 100% cotton meaning they are warm but breathable. The medium sized loop back gives a softness to an otherwise heavy fabric.

8. COTTON OXFORD

Our most popular shirts are our Oxford's. Cotton oxford is pure cotton in a tight gauge basket weave making it super durable.

9. POLYESTER RIP-STOP

Polyester rip-stop is an easy-to-wear light weight and water resistant fabric. We've used this in a long favourite of ours – the Cyrus Windbreaker as well as newcomer the Section Zip Jacket.

10. COTTON CANVAS

Our three styles of tote bags are made from premium 100% cotton, heavy weight canvas with a durable, plain weave making for the perfect printing surface.

11. COTTON DRILL

We use cotton with a drill weave in our heavier outerwear products. To allow for a slight stretch in our pants we add a small amount of elastane to this fabric for comfort.

OUR COLOURS - HEATHERS / WASHES.

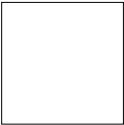
Our range has more than 60 colours and is ever expanding. This colour chart provides approximate examples of the colours; providing equivalent Pantone colour names (Pantone Matching System®, PMS colours) for our solids for your reference.

Some colours can't be accurately reproduced because of the unique characteristics of certain fabrics; when possible, please refer to an actual garment.

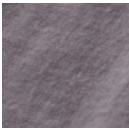
Most of our heather fabrics are a polyester/cotton blend where the fabric is dyed after it has been knitted. The polyester thread doesn't absorb the dye creating the heather effect. With our 100% cotton heathers the yarn is dyed first and afterward knitted into fabric with a contrasting yarn to create the heathered look.

Our Stone Wash fabrics have been treated to produce a faded, vintage appearance.

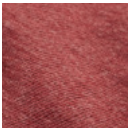
KEY



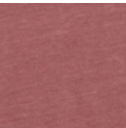
Colour Name
Colour PMS



Orchid
Stone



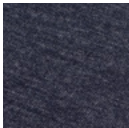
Brick
Heather



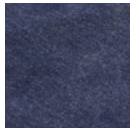
Faded
Wine



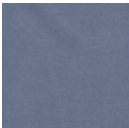
Navy
Thatch



Navy
Heather



Blue
Stone



Faded
Blue



Faded
Slate



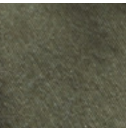
Light Blue
Heather



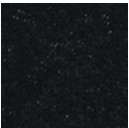
Army
Thatch



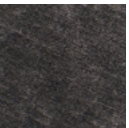
Army
Heather



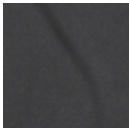
Moss
Stone



Black
Heather



Black
Stone



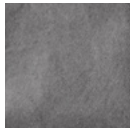
Faded
Black



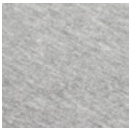
Asphalt
Heather



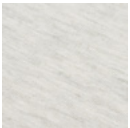
Asphalt
Thatch



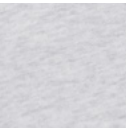
Grey
Stone



Athletic
Heather



Oatmeal
Heather



White
Heather

OUR COLOURS - SOLIDS.



Cream
7506 C 15%



Natural
7506 C 50%



Lemon
Yellow 0131 C



Yellow
7408 C



Gold
1365 C



Mustard
110 C



Orange
1575 C



Copper
7600 C



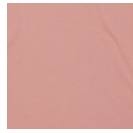
Red
185 C



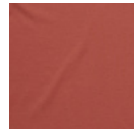
Pink
2043 C



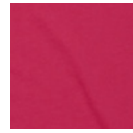
Pale Pink
7513 C



Rose
693 C



Coral
7523 C



Fuchsia
213 C



Lavender
522 C



Purple
7678 C



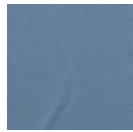
Burgundy
7643 C



Light Blue
2708 C



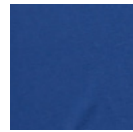
Pale Blue
7542 C



Carolina Blue
278 C



Arctic Blue
2925 C



Bright Royal
7685 C



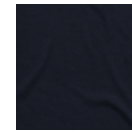
Harbour Blue
646 C



Petrol Blue
2376 C



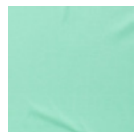
Indigo
303 C



Navy
5395 C



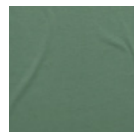
Lagoon
7497 C



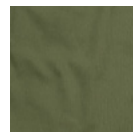
Aqua
573 C



Teal
7465 C



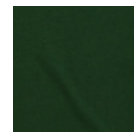
Sage
5565 C



Military Green
5743 C



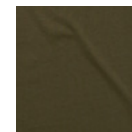
Kelly Green
7731 C



Forest Green
350 C



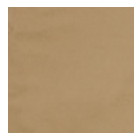
Emerald Green
3302 C



Army
5763 C



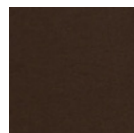
Tan
2310 C



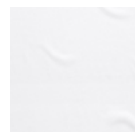
Khaki
7521 C



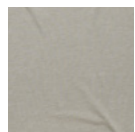
Coffee
7531 C



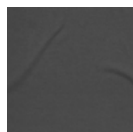
Dark Chocolate
4625 C



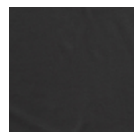
White



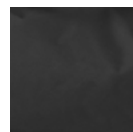
Light Grey
427 C



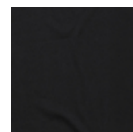
Charcoal
425 C



Coal
7540 C



Dark Grey
424 C



Black
Black 6 C

S O C I A L R E S P O N S I B I L I T Y .

At AS Colour we recognise our responsibilities to workers for the conditions under which our products are made. We only work with factories that can assure audit-able standards of safe, fair, legal and humane working conditions. Aiming for transparency and traceability at all levels of our supply chain – we are proud to be certified by the following compliance programmes.



CHILD LABOR FREE.

AS Colour is proudly certified *Child Labor Free* to Manufacturing level. *Child Labor Free* is a certification that independently inspects and analyses supply chains for the use of child labor.

Child Labor Free certification empowers consumers to recognise brands that do not use child labor and supports brands to ensure child labor does not exist in their supply chains.

Child Labor Free is a certification mark that provides best assurance that the product or brand carrying the mark has met the required standard.

For information please visit www.childlaborfree.com



AMFORI BSCI.

The *Amfori BSCI* (Business Social Compliance Initiative) is a leading business-driven initiative for companies committed to improving working conditions in factories and farms worldwide.

They offer a system to monitor working conditions of manufacturers through audits; those audits are then shared. Their Code of Conduct sets standards for working conditions based on international conventions such as:

The Universal Declaration of Human Rights, the Children's Rights and Business Principles, UN Guiding Principles for Business and Human Rights, OECD Guidelines, UN Global Compact and International Labour Organisation (ILO) Conventions and Recommendations.

You can visit www.amfori.org for further information



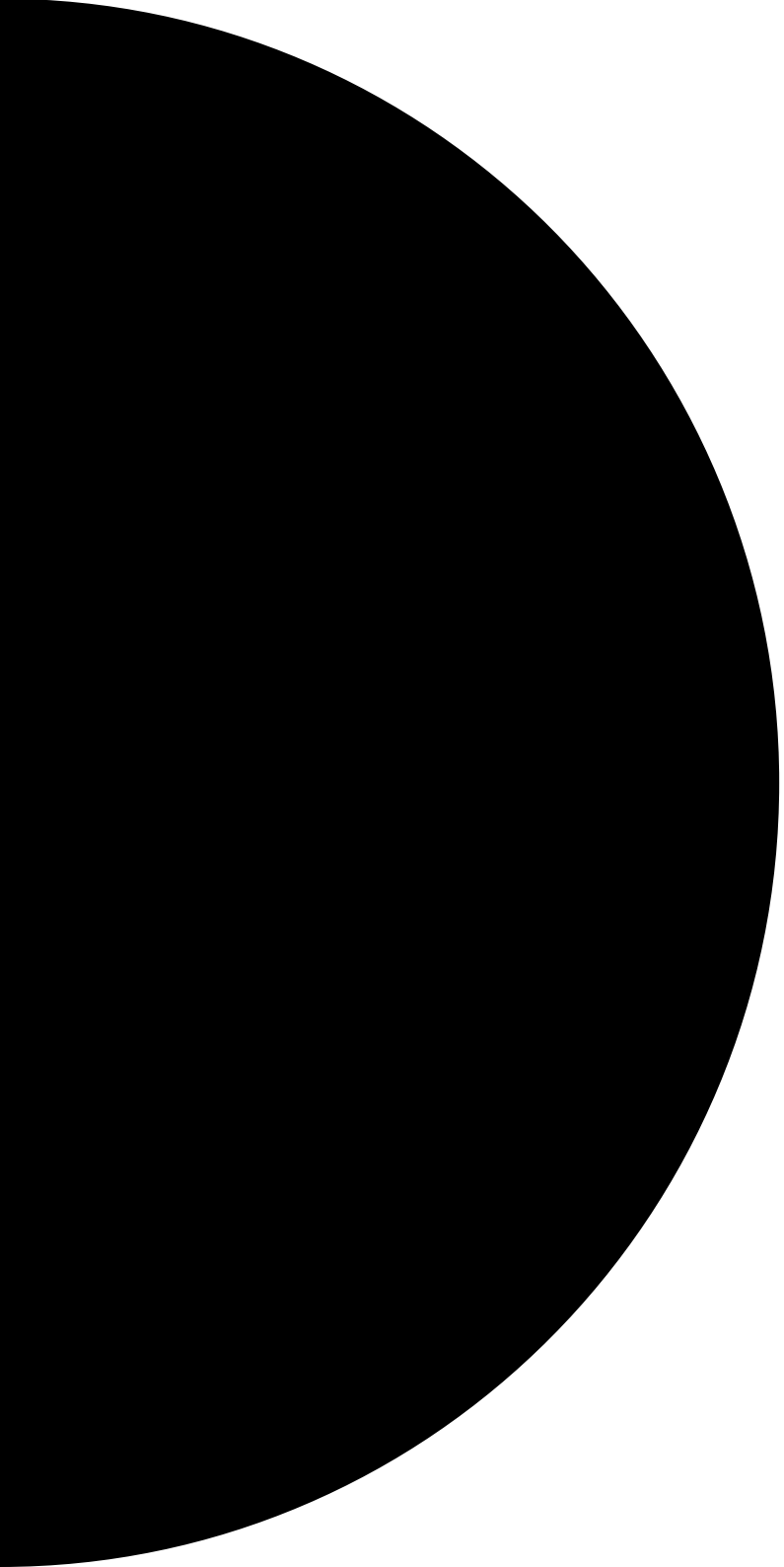
WRAP.

WRAP is the world's largest independent factory-based social compliance certification programme for the sewn products sector.

It's 12 Principles cover: compliance with local laws, prohibition of forced labor, child labor, discrimination, harassment or abuse, compensation and benefits, hours of work, health and safety, freedom of association, environment, customs compliance, security.

WRAP provides for at least annual unannounced audits, which include allowance for off-site employee interviews. From this, corrective action plans are put in place as well as follow-up audits to resolve any non-compliance before certification is awarded.

Full details available at www.wrapcompliance.org



M E N S .





STAPLE TEE - 5001/5001B.

Regular fit, crew neck
 Mid weight, 180g / 5.3oz, 28-singles
 100% combed cotton (heathers 15% polyester)
 Neck ribbing, side seamed, shoulder to shoulder tape,
 double needle hems, preshrunk to minimise shrinkage

Available in sizes SML – 3XL

5001B sizes: 4XL, 5XL (Black, Athletic Heather, Navy & White)





STAPLE STRIPE TEE - 5028.

Regular fit, crew neck
 Light weight, 160g / 4.7oz, 34-singles
 100% combed cotton
 Neck ribbing, side seamed, shoulder to shoulder tape,
 double needle hems, preshrunk to minimise shrinkage

Available in sizes SML – 2XL



White/Yellow



White/Red



Navy/White



Black/White



STAPLE POCKET TEE - 5010.

Regular fit, crew neck
 Mid weight, 180g / 5.3oz, 28-singles
 100% combed cotton (heathers 15% polyester)
 Neck ribbing, side seamed, shoulder to shoulder tape,
 double needle hems, preshrunk to minimise shrinkage

Available in sizes SML – 2XL



Ath. H./Black



Black/Ath. Heather



STAPLE HEATHER TEE - 5001M.

Regular fit, crew neck
Mid weight, 180g / 5.3oz, 24-singles
80% combed cotton, 20% polyester
Neck ribbing, side seamed, shoulder to shoulder tape,
double needle hems, preshrunk to minimise shrinkage

Available in sizes SML – 3XL



White Heather



Brick Heather



Army Heather



Navy Heather



Asphalt Heather



Black Heather





CAMO STAPLE TEE - 5001C.

Regular fit, crew neck
 Mid weight, 160g / 4.7oz, 26-singles
 100% cotton
 Printed pattern, neck ribbing, side seamed, double needle hems,
 shoulder to shoulder tape, preshrunk to minimise shrinkage

Available in sizes SML – 2XL



Camo



FADED TEE - 5065.

Regular fit, crew neck
 Mid-Weight, 180g / 5.3oz, 26-singles
 100% combed cotton
 Neck ribbing, side seamed, neck seam twin needle stitch, double needle hems,
 shoulder to shoulder tape, preshrunk to minimise shrinkage

Available in sizes SML – 2XL



Faded Wine

Faded Slate

Faded Blue

Faded Black



STONE WASH STAPLE TEE - 5040.

Regular fit, crew neck

Mid weight, 160g / 4.7oz, 32-singles

100% combed cotton

Stone wash finish with a worn look

Neck ribbing, side seamed, shoulder to shoulder tape, double needle hems, preshrunk to minimise shrinkage

Available in sizes SML – 2XL



Orchid Stone



Moss Stone



Blue Stone



Ash Stone



Black Stone





BOWERY STRIPE TEE - 5060.

Regular fit, crew neck
 Mid weight, 160g / 4.7oz, 30-singles
 100% combed cotton (heathers 15% polyester)
 5mm stripe, neck ribbing, side seamed, shoulder to shoulder tape,
 double needle hems, preshrunk to minimise shrinkage

Available in sizes SML – 2XL



Nat./Mid Blue



Black/Natural



Asphalt H./Black



TALL TEE - 5013.

Regular-Relaxed fit, crew neck,
 Mid weight, 180g / 5.3oz, 26-singles
 100% combed cotton (heathers 15% polyester)
 Extra long body, neck ribbing, side seamed, shoulder to shoulder tape,
 double needle hems, preshrunk to minimise shrinkage

Available in sizes SML – 2XL



White



Navy



Athletic Heather



Asphalt Heather



Black



STATE TEE - 5052.

Regular fit, crew neck

Mid weight, 180g / 5.3oz, 28-singles

100% combed cotton (heathers 15% polyester)

Curved hem, neck ribbing, side seamed, double needle hems, shoulder to shoulder tape, preshrunk to minimise shrinkage

Available in sizes SML - 2XL



White



Navy



Athletic Heather



Black





TARMAC V-NECK TEE - 5003.

Slim fit, V-neck
 Light weight, 150g / 4.4oz, 34-singles
 100% combed cotton
 Neck ribbing, side seamed, shoulder to shoulder tape,
 double needle hems, preshrunk to minimise shrinkage

Available in sizes SML – 2XL



White



Black



SHADOW TEE - 5011.

Regular-Relaxed fit, scoop neck
 Light weight, 150g / 4.4oz, 34-singles
 100% combed cotton (heathers 15% polyester)
 Longer body, self-fabric binding on neck, side seamed,
 double needle hems, preshrunk to minimise shrinkage

Available in sizes SML – 2XL



White



Navy



Athletic Heather



Black



BASIC TEE - 5051.

Regular fit, crew neck
Light weight, 160g / 4.7oz, 28-singles
100% cotton
Easy tear-out label, neck ribbing, side seamed,
shoulder to shoulder tape, double needle hems,
preshrunk to minimise shrinkage

Available in sizes SML – 2XL



White



Pale Pink



Red



Pale Blue



Navy



Army



Tan



Ath. Heather



Coal



Black







White



White Heather



Pale Pink



Lavender



Burgundy



Lagoon



Pale Blue



Petrol Blue



Navy



Charcoal



Yellow



Tan



Coffee



Army



Emerald Green



Athletic Heather



Black

CLASSIC TEE - 5026.

Relaxed fit, crew neck
 Heavy weight, 220g / 6.4oz, 22-singles
 100% combed cotton (heathers 15% polyester)
 Neck ribbing, side seamed, shoulder to shoulder tape,
 double needle hems, preshrunk to minimise shrinkage

Available in sizes SML – 3XL





CLASSIC POCKET TEE - 5027.

Relaxed fit, crew neck
 Heavy weight, 220g / 6.4oz, 22-singles
 100% combed cotton
 Tonal pocket, neck ribbing, side seamed, double needle hems,
 shoulder to shoulder tape, preshrunk to minimise shrinkage

Available in sizes SML – 2XL



CLASSIC STRIPE TEE - 5044.

Relaxed fit, crew neck
 Heavy weight, 200g / 5.9oz, 22-singles
 100% combed cotton
 Neck ribbing, side seamed, double needle hems,
 shoulder to shoulder tape, preshrunk to minimise shrinkage

Available in sizes XSM – 2XL





BARNARD TANK - 5025.

Regular fit

Light weight, 150g / 4.4oz, 34-singles

100% combed cotton (heathers 15% polyester)

Raw armhole edges, neck ribbing, double needle hem,
preshrunk to minimise shrinkage

Available in sizes XSM – 2XL



Pale Pink



Tan



Army



Navy



White



Athletic Heather



Coal



Black





STONE WASH BARNARD TANK - 5039.

Regular fit, ribbed crew neck
 Mid weight, 160g / 4.7oz, 32-singles
 100% combed cotton
 Stone wash finish, raw armhole edges, shoulder to shoulder tape,
 double needle hems, preshrunk to minimise shrinkage

Available in sizes XSM – 2XL



LOWDOWN SINGLET - 5007.

Regular fit
 Light weight, 150g / 4.4oz, 34-singles
 100% combed cotton (heathers 15% polyester)
 Regular singlet shape, Self-fabric bindings, double needle bottom hem,
 preshrunk to minimise shrinkage

Available in sizes SML – 2XL





AUTHENTIC SINGLET - 5004.

Regular fit

Light weight, 150g / 4.4oz, 34-singles

100% combed cotton (heathers 15% polyester)

Curved hem, self-fabric bindings at neck and armhole,
double needle bottom hem, preshrunk to minimise shrinkage

Available in sizes SML – 2XL



White



Navy



Athletic Heather



Black





RAGLAN TEE - 5012.

Regular fit, crew neck
 Light weight, 150g / 4.4oz, 34-singles
 100% combed cotton (heathers 15% polyester)
 3/4 length raglan sleeves, curved tails, side seamed, self-fabric binding on neck,
 double needle hems, preshrunk to minimise shrinkage

Available in sizes SML – 2XL



MATCH STRIPE LONG SLEEVE TEE - 5031.

Relaxed fit, crew neck
 Light weight, 160g / 4.7oz, 34-singles
 100% combed cotton
 Neck ribbing, side seamed, shoulder to shoulder tape,
 double needle hems, preshrunk to minimise shrinkage

Available in sizes SML – 2XL





BASE LONG SLEEVE TEE - 5029.

Relaxed fit, crew neck

Heavy weight, 200g / 5.9oz, 20-singles

100% carded cotton (heathers 15% polyester)

Longer body, cuffed sleeves, split detail at sides, slight drop at back

Neck ribbing, side seamed, shoulder to shoulder tape, double needle bottom hem, preshrunk to minimise shrinkage

Available in sizes SML – 2XL



Pale Pink



Tan



Army



Navy



White



Ash Heather



Athletic Heather



Coal



Black





INK LONG SLEEVE TEE - 5009.

Slim-Regular fit, crew neck
 Mid weight, 180g / 5.3oz, 26-singles
 100% combed cotton (heathers 15% polyester)
 Neck ribbing, side seamed, shoulder to shoulder tape,
 double needle hems, preshrunk to minimise shrinkage

Available in sizes SML – 2XL



BOWERY STRIPE LONG SLEEVE TEE - 5061.

Regular fit, crew neck
 Mid weight, 160g / 4.7oz, 30-singles
 100% combed cotton (heathers 15% polyester)
 5mm stripe, neck ribbing, side seamed, shoulder to shoulder tape,
 double needle hems, preshrunk to minimise shrinkage

Available in sizes SML – 2XL





CHAD POLO - 5402.

Regular fit, 3 button placket
Heavy weight, 220g / 6.4oz, 20-singles
100% combed cotton (heathers 15% polyester)
Tonal buttons, split detail at sides, side seamed,
double needle hems, preshrunk to minimise shrinkage

Available in sizes SML – 3XL



White



Navy



Athletic Heather



Black





RUGBY JERSEY - 5410.

Relaxed fit, white drill collar
 Heavy weight, 280g / 8.2oz, 24-doubles
 100% carded cotton (heathers 15% polyester)
 Herringbone tape at placket, ribbed cuffs, side split at hem,
 double needle hems, side seamed, preshrunk to minimise shrinkage

Available in sizes XSM – 2XL



Navy



Black



CHAD LONG SLEEVE POLO - 5404.

Regular fit, 3 button placket
 Heavy weight, 200g / 5.9oz, 20-singles
 100% carded cotton (heathers 15% polyester)
 Tonal buttons, split detail at sides, ribbed cuffs, side seamed,
 double needle bottom hem, preshrunk to minimise shrinkage

Available in sizes SML – 2XL



Athletic Heather



Black



OXFORD SHIRT - 5401.

Regular fit. button-down collar

Mid weight, 170g / 5oz

100% woven cotton

Chest pocket, clear buttons, adjustable cuffs, side seamed, back yoke, preshrunk to minimise shrinkage

Available in sizes SML – 2XL



White



Light Blue



Navy



Grey



Black





CHAMBRAY SHIRT - 5415.

Regular fit, button-down collar
 Light weight, 150g / 4.4oz
 100% cotton
 Chambray weave, adjustable cuffs, chest pocket, clear buttons,
 back yoke with centre pleat, side seamed, preshrunk to minimise shrinkage

Available in sizes SML – 2XL



Light Blue



Dark Navy



Indigo



BLUE DENIM SHIRT - 5409.

Regular fit, button-down collar
 Mid weight, 160g / 4.7oz
 100% cotton
 Chest pocket, clear buttons, adjustable cuffs, Side seamed,
 back yoke, preshrunk to minimise shrinkage

Available in sizes SML – 2XL



Denim Blue



DENIM WASH SHIRT - 5414.

Regular fit, button-down collar
 Mid weight, 170g / 5oz
 100% cotton
 Denim weave, chest pocket, pearl buttons, back yoke,
 side seamed, preshrunk to minimise shrinkage

Available in sizes SML – 2XL



Khaki



Army



Black



MILITARY SHIRT - 5412.

Relaxed fit
 Heavy weight, 240g / 7oz
 100% cotton drill
 Chest pockets with flap and button closures, tonal buttons,
 side seamed, back yoke, preshrunk to minimise shrinkage

Available in sizes SML – 2XL



Army



Black

BOX CREW - 5104.

Regular fit, crew sweat
Heavy weight, 350g / 10.3oz
80% cotton 20% polyester anti-pill fleece
Raglan sleeves, neck & sleeve cuff ribbing,
preshrunk to minimise shrinkage

Available in sizes XXS – 3XL



White



Navy



Athletic Heather



Asphalt Heather



Black





PREMIUM CREW - 5121.

Relaxed fit, crew neck
Heavy weight, 350g / 10.3oz
100% cotton French Terry
Inset sleeves, 2x2 ribbing on neck, cuff & hem,
cover stitching on seams, preshrunk to minimise shrinkage

Available in sizes XSM – 2XL



White Heather



Tan



Army



Athletic Heather



Black







White



Gold



Orange



Red



Forest Green



Bright Royal



Navy



Athletic Heather



Asphalt Heather



Black

SUPPLY HOOD - 5101.

Regular fit, pullover hood
Mid-weight, 290g / 8.5oz
80% cotton 20% polyester anti-pill fleece
Raglan sleeves, kangaroo pocket, lined hood, tonal drawcord,
sleeve cuff ribbing, preshrunk to minimise shrinkage

Price-point

Available in sizes XSM – 3XL







White



Tan



Burgundy



Army



Navy



Athletic Heather



Grahite



Asphalt Heather



Black

STENCIL HOOD - 5102.

Regular fit, pullover hood
Heavy weight, 350g / 10.3oz
80% cotton 20% polyester anti-pill fleece
Inset sleeves, kangaroo pocket, lined hood,
tonal shoestring drawcord, sleeve cuff ribbing,
preshrunk to minimise shrinkage

Available in sizes XXS – 3XL





STENCIL CAMO HOOD - 5102C.

Regular fit, pullover hood
 Heavy weight, 350g / 10.3oz
 80% cotton 20% polyester anti-pill fleece
 Inset sleeves, kangaroo pocket, sleeve cuff ribbing, dyed-to-match lined hood & shoestring drawcord, preshrunk to minimise shrinkage

Available in sizes SML – 2XL



Camo



STENCIL HEATHER HOOD - 5102M.

Regular fit, pullover hood
 Heavy weight, 350g / 10.3oz
 80% cotton 20% polyester fleece
 Inset sleeves, kangaroo pocket, DTM Lining & drawcord, ribbed hem & sleeve cuff, preshrunk to minimise shrinkage

Available in sizes XSM – 3XL



White Heather



Black Heather



PREMIUM HOOD - 5120.

Relaxed fit, pullover hood
 Heavy weight, 350g / 10.3oz
 100% cotton French Terry
 Raglan sleeves, kangaroo pocket, metal tipped drawcord, hem & sleeve 2x2 ribbing, cover stitching on seams, preshrunk to minimise shrinkage

Available in sizes XSM – 2XL



White Heather



Tan



Army



Athletic Heather



Black



OFFICIAL ZIP HOOD - 5103.

Regular fit, pullover hood
 Mid-weight, 290g / 8.5oz
 80% cotton 20% polyester anti-pill fleece
 Raglan sleeves, kangaroo pocket, lined hood, tonal drawcord, metal zip, hem & cuff 1x1 ribbing, preshrunk to minimise shrinkage

Available in sizes XSM – 2XL



White Heather



Navy



Athletic Heather



Black



BOMBER JACKET - 5506.

Regular fit
 Heavy weight, 310g / 9oz
 100% cotton drill
 Shell jacket, metal anti-black YKK zipper, two side pockets,
 ribbed collar; hem & cuffs, preshrunk to minimise shrinkage

Available in sizes SML – 2XL



Army



Black



COACH CAMO JACKET - 5520C.

Regular fit
 Light weight, 80g / 2.3oz
 100% nylon body & sleeve lining (polyester body lining)
 Collared jacket, two side pockets, snap dome to close,
 drawcord at hem, elastic cuffs

Available in sizes SML – 2XL



Camo



COACH JACKET - 5520.

Regular fit

Light weight, 80g / 2.3oz

100% nylon body & sleeve lining (polyester body lining)

Collared jacket, two side pockets, snap dome to close, drawcord at hem, elastic cuffs

Available in sizes SML – 2XL



Navy



Coal



Black





SECTION ZIP JACKET - 5508.

Regular fit
 Light weight, 90g / 2.6oz
 100% polyester rip-stop
 Waterproof zips, adjustable elastic drawcords at hem and hood,
 packable, rubber headphone patch, sealed seams, water resistant

Available in sizes XSM – 2XL



Khaki



Black



CAMO CYRUS WINDBREAKER - 5501C.

Regular fit, pullover zip-up hood
 Light weight, 90g / 2.6oz
 100% polyester rip-stop
 Water resistant, plastic YKK zip, invisible zips at pockets, metal tipped drawcord,
 packable, rubber headphone patch, adjustable elastic drawcord at hem, 2 side pockets

Available in sizes SML – 2XL



Camo



CYRUS WINDBREAKER - 5501.

Regular fit, pullover zip-up hood

Light weight, 90g / 2.6oz

100% polyester rip-stop

Water resistant, plastic tooth YKK zip, invisible zips at pockets,

double sided puller on front pouch zip, metal tipped drawcord

Packable, rubber headphone patch, elastic drawcord at hem,

2 side pockets

Available in sizes XSM – 2XL



White



Army



Black



WALK SHORTS - 5909.

Regular fit

Mid weight, 250g / 7.3oz

98% cotton 2% elastane

Elasticated waistband, metal tipped drawcord, 2 side pockets,
jet pockets at back with button closure,
preshrunk to minimise shrinkage

Available in sizes 30 – 38



Khaki



Navy



Military Green



Black





BEACH SHORTS - 5903.

Regular fit, shorter length

Light weight, 130g / 3.8oz

100% cotton

Elastic waistband, internal drawcord, 2 side & 2 back mesh lined pockets, preshrunk to minimise shrinkage

Available in sizes 30 – 38



Pale Pink



Carolina Blue



Army Stone



Grey Stone



Black





PLAIN SHORTS - 5902.

Slim-Regular fit, chino shorts
 Mid weight, 250g / 7.3oz
 98% cotton 2% elastane
 Belt loops on waist, button closure, anti-brass metal YKK zip fly,
 2 side pockets, jet pockets at back,
 preshrunk to minimise shrinkage

Available in sizes 28 – 40



Khaki



Army



Navy



Black



TRACK SHORTS - 5905.

Regular fit
 Mid weight, 320g / 9.4oz
 82% cotton 18% polyester anti-pill French Terry fleece
 2 side and 1 back pocket, elastic waistband, white drawcord,
 raw edges, pocket stitching detail,
 preshrunk to minimise shrinkage

Available in sizes SML – 2XL



Steel Heather



Black Heather



STADIUM SHORTS - 5916.

Slim-Regular fit,
Heavy weight, 320g / 9.4oz
75% cotton 25% polyester French Terry
2X2 ribbed waistband, 2 side & 1 back pocket, metal tipped drawcord,
double needle hems, preshrunk to minimise shrinkage

Available in sizes SML – 2XL



White Heather



Steel Heather



Black



STADIUM CAMO SHORTS - 5916C.

Slim-Regular fit,
Heavy weight, 320g / 9.4oz
75% cotton 25% polyester French Terry
2X2 ribbed waistband, 2 side & 1 back pocket, metal tipped drawcord,
double needle hems, preshrunk to minimise shrinkage

Available in sizes SML – 2XL



Camo



SURPLUS TRACK PANTS - 5917.

Regular fit
 Mid weight, 290g / 8.5oz
 80% cotton 20% polyester anti-pill fleece
 Self-fabric elasticated waistband & hem cuffs, 2 side pockets, single pocket at back, tonal external drawcord, preshrunk to minimise shrinkage

Available in sizes SML – 2XL



White Heather Athletic Heather Navy Black



FLECK TRACK PANTS - 5915.

Slim fit
 Heavy weight, 330g / 9.7oz
 100% cotton French Terry
 Ribbed waistband & hem cuffs, 2 side pockets, white metal-tipped drawcord, 1 waterproof zipped back pocket, preshrunk to minimise shrinkage

Available in sizes SML – 2XL



Grey Fleck Black Fleck



STANDARD PANTS - 5901.

Slim-Regular fit, chino pants

Mid weight, 250g / 7.3oz

98% cotton 2% elastane

2 side pockets, jet pockets at back, button closure,
anti-brass metal YKK zip fly, preshrunk to minimise shrinkage

Available in sizes 28 – 40



Khaki



Navy



Black



STAPLE ORGANIC TEE - 5001G.

Regular fit, crew neck

Mid weight, 180g / 5.3oz, 24-singles

100% combed organic cotton (heathers 15% viscose)

Neck ribbing with twin needle stitch, side seamed,
shoulder to shoulder tape, double needle hems,
preshrunk to minimise shrinkage

Available in sizes XSM – 3XL



White



Natural



Navy



Athletic H.



Black





ascolour.
organic.

We've been working on expanding our range of Organic products, adding an organic option to some of our most popular styles – Staple & Maple Tees, Barnard Tank and Base L/S Tee.

The yarn used in this line of products is grown without the use of herbicides or pesticides and is certified by **GOTS** (Global Organic Textiles Standards). Our organic garments have been certified '**Organic 100**' by **OCS** (Organic Content Standard) guaranteeing that they are made from no less than 95% organic material.

Our factory uses certified production lines to manufacture our organic products – everything from dyeing using organic pigments to knitting and the treatment of waste water is compliant with **GOTS + CUC** (Control Union Certificate) environmental processing regulations.

BARNARD ORGANIC TANK - 5025G.

Regular fit, crew neck

Mid weight, 180g / 5.3oz, 24-singles

100% combed organic cotton

Raw armhole edges, neck ribbing with twin needle stitch,
side seamed, double needle hems,
preshrunk to minimise shrinkage

Available in sizes XSM – 3XL



White



Natural



Black





BASE ORGANIC L/S TEE - 5029G.

Regular fit, crew neck
Mid weight, 180g / 5.3oz, 24-singles
100% combed organic cotton
Neck ribbing with twin needle stitch, ribbed cuff, split hem,
side seamed, shoulder to shoulder tape, double needle hems,
preshrunk to minimise shrinkage

Available in sizes XSM – 3XL



White



Natural



Black



MAPLE ORGANIC TEE - 4001G.

Regular fit, crew neck

Mid weight, 180g / 5.3oz, 34-singles

100% combed organic cotton

Neck ribbing with twin needle stitch, side seamed,
shoulder to shoulder tape, double needle hems,
preshrunk to minimise shrinkage

Available in sizes XSM – XLG



White



Natural



Black





MIKA ORGANIC SHORT SLEEVE DRESS - 4028.

Slim fit, scoop neck
 Light Weight, 150g / 4.4oz, 34-singles
 100% organic cotton (heathers 15% viscose)
 Short length, self-fabric binding on neck, double needle hems,
 side seamed, preshrunk to minimise shrinkage

Available in sizes XSM – XLG



Ath. Heather



Black



MIKA ORGANIC LONG SLEEVE DRESS - 4033.

Regular fit, scoop neck
 Light weight, 150g / 4.4oz, 34-singles
 100% organic combed cotton (heathers 15% viscose)
 Mid length, self-fabric binding on neck and sleeve hems, double
 needle hems, side seamed preshrunk to minimise shrinkage

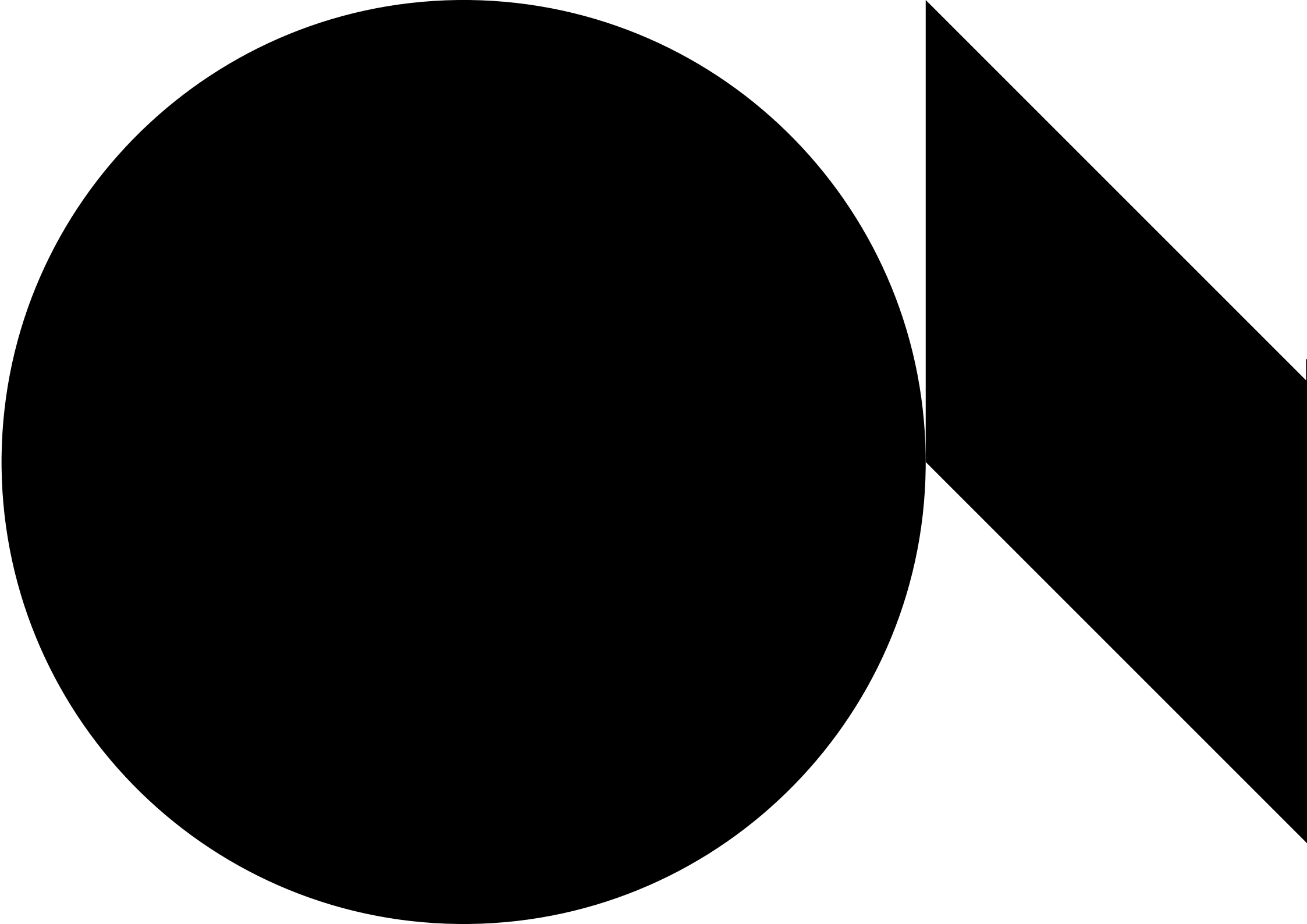
Available in sizes XSM – XLG



Ath. Heather



Black





**W O
M E N S .**





White



Pale Pink



Lavender



Rose



Fuchsia



Yellow



Orange



Coral



Red



Burgundy



Natural



Pale Blue



Carolina Blue



Indigo



Navy



Tan



Sage



Army



Forest Green



Charcoal



Athletic Heather



Asphalt Heather



Black

MAPLE TEE - 4001.

Regular fit, crew neck

Mid weight, 180g / 5.3oz, 28-singles

100% combed cotton (heathers 15% polyester)

Neck ribbing, side seamed, shoulder to shoulder tape,
double needle hems, preshrunk to minimise shrinkage

Available in sizes XSM – XLG



DROP TEE - 4052.

Regular fit, crew neck

Mid weight, 150g / 4.4oz, 34-singles

100% combed cotton (heathers 15% polyester)

Curved hem, neck ribbing, side seamed,
shoulder to shoulder tape, double needle hems,
preshrunk to minimise shrinkage

Available in sizes XSM – XLG



White



Navy



Athletic Heather



Black





MAPLE STRIPE TEE - 4037.

Regular fit, crew neck
Light weight, 160g / 4.7oz, 34-singles
100% combed cotton
Neck ribbing, side seamed, shoulder to shoulder tape,
double needle hems, preshrunk to minimise shrinkage

Available in sizes XSM – XLG



White/Yellow



White/Red



Navy/White



Black/White







White



Oatmeal Heather



Light Blue Heather



Indigo



Navy



Army



Burgundy



Athletic Heather



Coal



Black

MALI TEE - 4008.

Regular fit, scoop neck
Light weight, 150g / 4.4oz, 34-singles
100% combed cotton (heathers 15% polyester)
Capped sleeves, curved tails, self-fabric binding on neck,
side seamed, double needle hems,
preshrunk to minimise shrinkage

Available in sizes XSM – XLG





BEVEL V-NECK TEE - 4010.

Regular fit, V-neck
 Light weight, 150g / 4.4oz, 30-singles
 100% combed cotton (heathers 15% polyester)
 Capped sleeves, self-fabric binding on neck, side seamed,
 double needle hems, preshrunk to minimise shrinkage

Available in sizes XSM – XLG



White Athletic Heather Black



LA BREA LOW V-NECK - 4047.

Regular fit, low V-neck
 Light weight, 120g / 3.5oz, 34-singles
 100% combed cotton (heathers 15% polyester)
 Self-fabric ribbing on neck, side seamed, shoulder to shoulder tape,
 double needle bottom hem, preshrunk to minimise shrinkage

Available in sizes XSM – XLG



White Athletic Heather Black



SHALLOW SCOOP TEE - 4011.

Regular fit, scoop neck
Light weight, 150g / 4.4oz, 34-singles
100% combed cotton (heathers 15% polyester)
Self-fabric binding on neck, shoulder to shoulder tape,
double needle hems, preshrunk to minimise shrinkage

Available in sizes XSM – XLG



White



Navy



Athletic Heather



Black



THREAD TEE - 4048.

Regular fit, scoop neck

Light weight, 150g / 4.4oz, 34-singles

100% combed cotton

Thin stripe, self-fabric neck binding, side seamed,
shoulder to shoulder tape, double needle hems,
preshrunk to minimise shrinkage

Available in sizes XSM – XLG



White/Navy



Natural/Black





CROP TEE - 4062.

Relaxed fit

Mid weight, 180g / 5.3oz, 28-singles

100% combed cotton (heathers 15% polyester)

Short body, dropped shoulders, neck ribbing, side seamed, shoulder to shoulder tape, double needle hems, preshrunk to minimise shrinkage

Available in sizes XSM – XLG



White



Pale Pink



Athletic Heather



Black





CUBE TEE - 4003

Relaxed fit, crew neck
 Light weight, 150g / 4.4oz, 34-singles
 100% combed cotton (heathers 15% polyester)
 Wide neck ribbing, side seamed, shoulder to shoulder tape,
 double needle hems, preshrunk to minimise shrinkage

Available in sizes XSM – XLG



White Pale Pink Athletic Heather Black



SQUARE POCKET TEE - 4046.

Relaxed fit, crew neck
 Light weight, 130g / 3.8oz, 36-singles
 100% combed cotton (heathers 15% polyester)
 Wide neck ribbing, chest pocket, side seamed, shoulder to shoulder tape,
 double needle hems, preshrunk to minimise shrinkage

Available in sizes XSM – XLG



White Pale Pink Athletic Heather Black



BROOKLYN TANK - 4043.

Regular fit, crew neck

Light weight, 130g / 3.8oz, 36-singles

100% combed cotton (heathers 15% polyester)

Raw armhole edges, neck ribbing, double needle hems,
side seamed, preshrunk to minimise shrinkage

Available in sizes XSM – XLG



White



Pale Pink



Athletic Heather



Black



PILLAR SINGLET - 4022.

Regular fit, lower neck

Light weight, 120g / 3.5oz, 34-singles

100% combed cotton

Thin shoulder straps, curved hem,
self-fabric bindings at neck & armhole, double needle bottom hem,
preshrunk to minimise shrinkage

Available in sizes XSM – XLG



White



Black





SUNDAY SINGLET - 4004.

Regular fit, scoop neck
Light weight, 150g / 4.4oz, 34-singles
100% combed cotton (heathers 15% polyester)
Curved hem, slightly narrow at upper chest,
double needle bottom hem, self-fabric bindings at neck & armhole,
preshrunk to minimise shrinkage

Available in sizes XSM - XLG



White



Navy



Athletic Heather



Black



YES RACERBACK SINGLET - 4045.

Regular fit, wider scoop neck

Light weight, 120g / 3.5oz, 34-singles

100% combed cotton (heathers 15% polyester)

Racerback, curved hem, self-fabric binding at neck & armholes,
double needle bottom hem, preshrunk to minimise shrinkage

Available in sizes XSM – XLG



White



Athletic Heather



Black





BALANCE RACERBACK SINGLET - 4044.

Slim fit, scoop neck

Light weight, 120g / 3.5oz, 34-singles

100% combed cotton (heathers 15% polyester)

Narrow racerback detail, self-fabric facing at neck & armholes, double needle bottom hem, preshrunk to minimise shrinkage

Available in sizes XSM – XLG



White



Athletic Heather



Black



CHELSEA LONG SLEEVE TEE - 4034.

Regular fit, crew neck

Light weight, 130g / 3.8oz, 36-singles

100% combed cotton (heathers 15% polyester)

Neck ribbing, double needle hems, side seamed,
preshrunk to minimise shrinkage

Available in sizes XSM – XLG



White



Pale Pink



Athletic Heather



Black





CURVE LONG SLEEVE TEE - 4055.

Regular fit, crew neck

Light weight, 150g / 4.4oz, 34-singles

100% combed cotton (heathers 15% polyester)

Curved hem, self-fabric binding on neck, side seamed, shoulder to shoulder tape, double needle hems, preshrunk to minimise shrinkage

Available in sizes XSM – XLG



White



Navy



Athletic Heather



Black



WO'S BLUE DENIM SHIRT - 4042.

Regular fit

Mid weight, 160g / 4.7oz

100% cotton

Clear buttons, deep curved hem with longer back, back yoke,
side seamed, preshrunk to minimise shrinkage

Available in sizes XSM – LRG



Denim Blue





AMY POLO - 4402.

Regular fit, collared polo
Mid weight, 180g / 5.3oz, 34-singles
100% combed cotton (heathers 15% polyester)
3 button placket, tonal buttons, side seamed,
double needle hems, preshrunk to minimise shrinkage

Available in sizes XSM – XLG



White



Navy



Black





WO'S CROPPED HOOD - 4122.

Relaxed fit, pullover hood, inset sleeves
 Heavy weight, 350g / 10.3oz
 100% cotton French Terry
 Dropped shoulders, unlined hood, hem & sleeve cuff 2x2 ribbing,
 Cover stitching on seams, preshrunk to minimise shrinkage

Available in sizes XSM – XLG



Pale Pink

Black



WO'S PREMIUM HOOD - 4120.

Relaxed fit, pullover hood, inset sleeves
 Heavy weight, 350g / 10.3oz
 100% Cotton French Terry
 Dropped shoulders, kangaroo pocket, unlined hood, hem & sleeve cuff 2x2 ribbing
 Cover stitching on seams, preshrunk to minimise shrinkage

Available in sizes XSM – XLG



Pale Pink

Athletic Heather

Black



WO'S PREMIUM CREW - 4121.

Relaxed fit

Heavy weight, 350g / 10.3oz

100% cotton French Terry

Dropped shoulders, neck; cuff & hem 2x2 ribbing

Cover stitching on seams, preshrunk to minimise shrinkage

Available in sizes XSM – XLG



Pale Pink

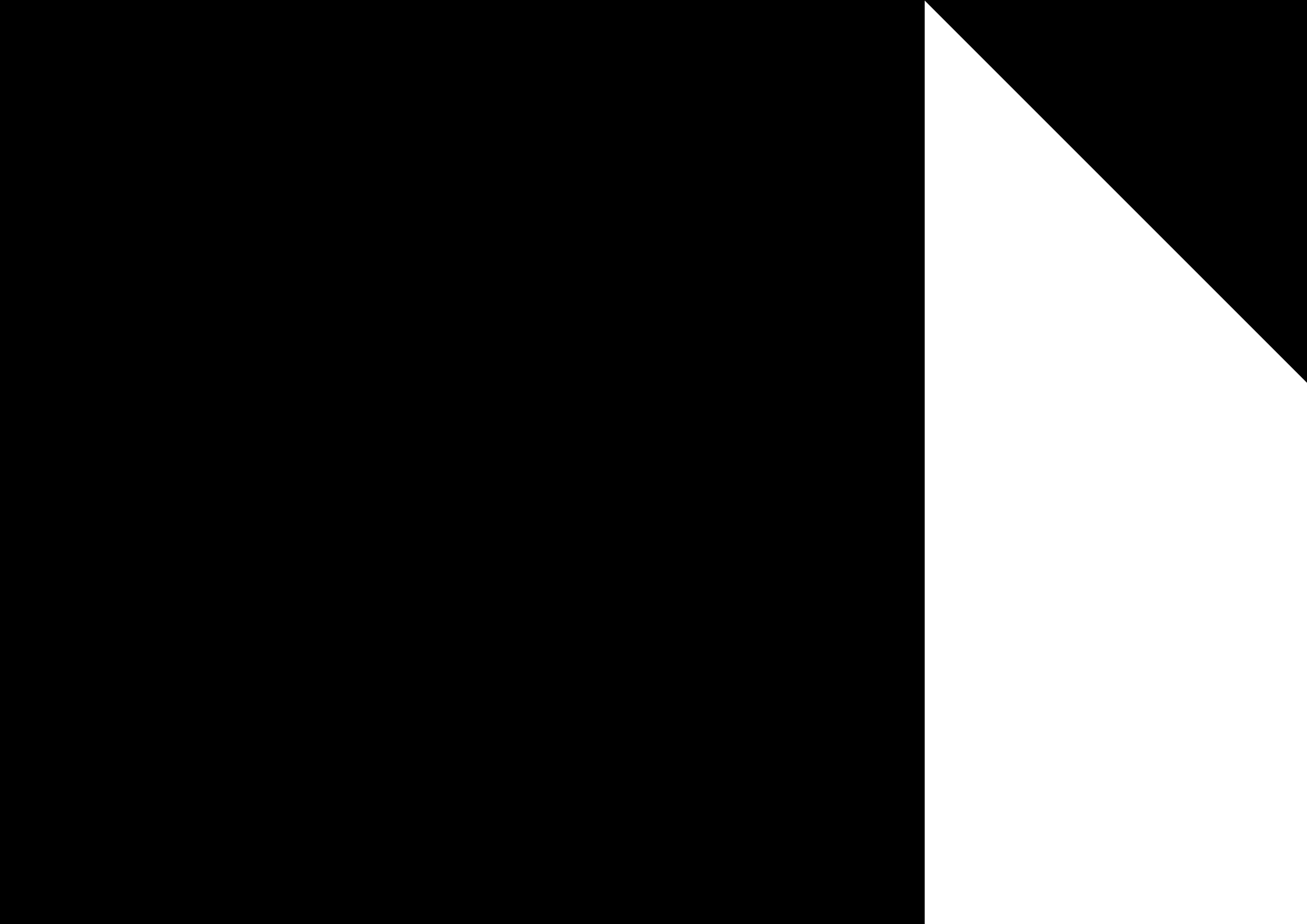


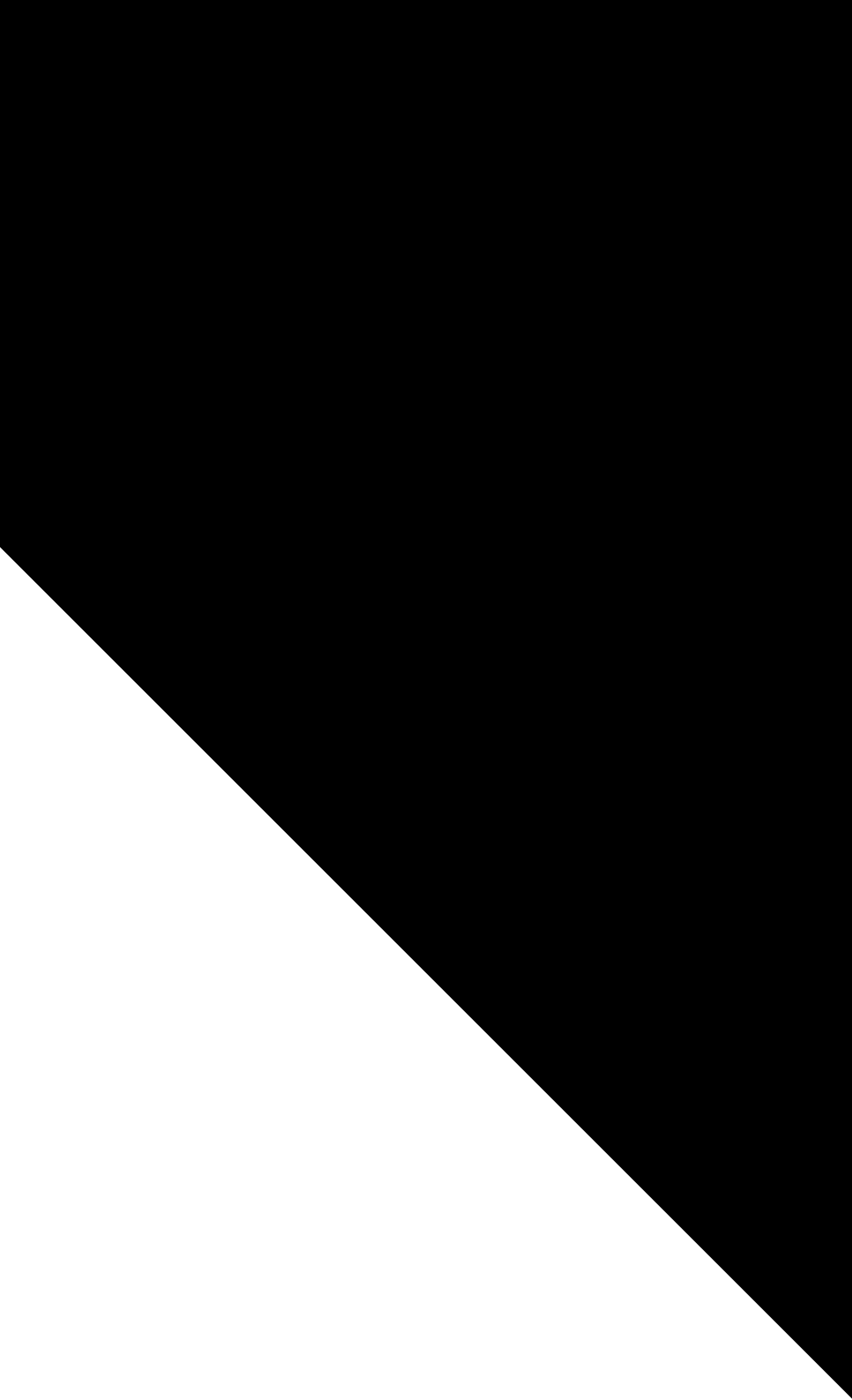
Athletic Heather



Black







**HATS
/ BAGS .**

STOCK CAP - 1100.

Lower profile snapback

Mid weight

80% acrylic 20% wool

Adjustable plastic fastener, light grey under-peak lining,
stitching eyelets, self fabric dome at top

One size fits all



White



Forest Green



Navy



Athletic Heather



Dark Grey



Black





DAVIE SIX PANEL CAP - 1111.

Low profile six panel
Light weight
100% cotton
Curved peak, adjustable fastener with metal clasp,
tonal under-peak lining

One size fits all



Natural



Pale Pink



Coffee



Pale Blue



Harbour Blue



Navy



Sage



Dark Grey



Black



BATES CAP - 1113.

Lower profile six panel
 Mid weight
 50% wool 50% polyester
 Adjustable fastener with metal clasp, tonal under-peak lining

One size fits all



Navy

Steel

Black



SURF CAP - 1114.

Lower profile, unstructured snapback
 Light weight
 100% quick dry nylon
 Single panel at front, adjustable plastic fastener, tonal under-peak lining

One size fits all



Khaki

Navy

Black



JAMES CAP - 1116.

Low profile six panel
Light weight
100% cotton
Adjustable fastener with metal clasp,
tonal underpeak lining

One size fits all



Coffee



Copper



Petrol Blue



Black



BUCKET CAP - 1117.

Light-Mid weight
 10% cotton
 Reinforced brim with stitch detailing, side eyelets

One size fits all



KNIT BEANIE - 1115.

Ribbed knit
 Mid weight
 50% wool 50% acrylic
 Cuffed hem

One size fits all





CUFF BEANIE - 1107.

Tight knit
Mid weight
100% acrylic
Cuffed hem, longer body

One size fits all



White



Copper



Army



Navy



Athletic Heather



Asphalt Heather



Black



PARCEL TOTE - 1000.

Mid weight, 320g / 9.4oz
 100% cotton canvas
 One large main compartment, reinforced twin shoulder straps,
 squared off hem

One size 39cm x 35.5cm



Cream Athletic Heather



CARRIE TOTE - 1001.

Mid weight, 320g / 9.4oz
 100% cotton canvas
 Reinforced shoulder straps, one large main compartment

One size 42cm x 42cm



Cream Army Graphite Black



DENIM CARRIE TOTE - 1012.

Mid weight, 350g / 10.3oz

100% cotton

Reinforced shoulder straps, one large main compartment

One size 42cm x 42cm



Denim



SHOULDER TOTE - 1002.

Mid weight, 320g / 9.4oz

100% cotton canvas

Reinforced shoulder straps, one large main compartment, flat fold bottom

One size 37cm x 46cm



Cream



Black



WAIST BAG - 1014.

Mid weight, 225g / 6.6oz
 100% polyester with PU coating
 One large main compartment, one external zipped pocket
 Adjustable waist strap, YKK zips

One size 23.5cm x 15cm



Black



WAIST CONTRAST BAG - 1015.

Mid weight, 190g / 5.6oz
 100% polyester with PU coating
 One large main compartment, one external zipped pocket
 Adjustable waist strap, YKK zips

One size 23.5cm x 15cm



Army Thatch

Navy Thatch

Asphalt Thatch



FLIGHT BAG - 1016.

Mid weight, 225g / 6.6oz
 100% polyester with PU coating
 One large main compartment, one external zippered pocket, one internal pocket
 Adjustable shoulder strap, YKK zips

One size 16cm x 20cm



Black



FLIGHT CONTRAST BAG - 1017.

Mid weight, 190g / 5.6oz
 100% polyester with PU coating
 One large main compartment, one external zippered pocket, one internal pocket
 Adjustable shoulder strap, YKK zips

One size 16cm x 20cm



Army Thatch



Navy Thatch



Asphalt Thatch



METRO BACKPACK - 1010.

Mid weight, 225g / 6.6oz
 100% polyester with PU coating
 One large main compartment, smaller front compartment,
 internal laptop sleeve, adjustable shoulder strap

One size 43cm x 30cm x 13cm, 17 litre capacity



Black



METRO CONTRAST BACKPACK - 1011.

Mid weight, 190g / 5.6oz
 100% polyester with PU coating
 One large main compartment, smaller front compartment,
 internal laptop sleeve, adjustable shoulder strap

One size 43cm x 30cm x 13cm, 17 litre capacity



Army/Black



Stone Grey/Black



Asphalt T./Black



DAY BACKPACK - 1013.

Mid weight, 190g / 5.6oz

100% polyester with PU coating

One large main compartment, smaller front compartment,
internal laptop sleeve, adjustable shoulder strap

One size 42cm x 25cm x 15cm, 14 litre capacity



Army Thatch



Navy Thatch



Asphalt Thatch



AREA DUFFEL BAG - 1003.

Cylinder duffel
 Mid weight, 390g / 11.5oz
 100% polyester with PVC coating
 One large main compartment, one external zipped compartment,
 YKK tonal nylon zip, reinforced adjustable shoulder strap and handles

 One size 30cm x 59cm, 53 litre capacity



Black



AREA CONTRAST DUFFEL BAG - 1008.

Cylinder duffel
 Mid weight, 420g / 12.4oz
 100% polyester with PVC coating
 One large main compartment, one external zipped compartment,
 YKK tonal nylon zip, reinforced adjustable shoulder strap and handles

 One size 30cm x 59cm, 53 litre capacity



Khaki/Black



Navy/Black



Stone Grey/Black



Dark Grey/Black



AREA CAMO DUFFEL BAG - 1006.

Cylinder duffel
Mid weight, 420g / 12.4oz
100% polyester with PVC coating
One large main compartment, one external zipped compartment,
YKK tonal nylon zip, reinforced adjustable shoulder strap and handles

One size 30cm x 59cm, 53 litre capacity



Camo/Black



TRANSIT TRAVEL BAG - 1009.

Square duffel
Mid weight, 390g / 11.5oz
100% polyester with PVC coating
One large main compartment, one external zipped shoe compartment,
YKK tonal nylon zip, reinforced cotton adjustable shoulder strap and handles

One size 28cm x 28cm x 58cm, 50 litre capacity



Army/Natural



Black/Natural



Asphalt Thatch/Black

ABOUT US.

AS Colour designs and manufactures quality basics.
We believe in taking our time with every product we make.
We only design and produce premium apparel that will stand the test of time.

AS Colour is guided by
three key principles:

Quality is key.
Respect the details.
Keep it simple.



as
colour

